

Imagine Mesa, Play Subcommittee

Meeting Minutes

November 2, 2017

I. Call to order

Jo Martin called to order the regular meeting of the Imagine Mesa Play Subcommittee at 5:35pm on November 2, 2017 at Mesa City Plaza, Room 650.

II. Roll call

The following persons were present: Subcommittee members: Matt Law, Justin Murdock, Winnie Kaplan, and Jo Martin. City of Mesa Staff: Marc Heirshberg, Aimee Manis, Janet Woolum, and Eric Guderian.

III. Minutes from October 19 meeting were approved as corrected.

IV. Requested Presentations

1. Presentation by representatives regarding the Landing at Lehi Falls. (see presentation)

Q&A: Jo asked if funding has been promised by any state/federal organization. Presenter: ADOT stated the land would be turned over to the City or rented for a small fee, as long as the City maintains the area.

V. Discussion of Ideas

Janet Woolum provided information on moving forward using working documents for evaluating ideas. Jo Martin opened discussion and ask subcommittee members to provide ratings of the ideas based on categories: Transformational, Momentum Builder, Quick Win, and Derailer.

Idea #1 Youth Sports. Matt: Transformational; Winnie: Quick Win—likes the project; Justin: Transformational—for Mesa and East Valley; Jo: Transformational—asks about a revenue source

Idea #3 Bike-pedestrian paths. Matt: Quick Win—but city already has a lot going on in this area, would like to see a larger plan. Winnie: Quick Win/Momentum Builder—don't need to spend \$\$ on trails, need connections to light rail. Justin: Transformational—maybe trails could bring more people to Mesa. Jo: Transformational—discussed her past w/Apache Junction economic development board

Idea #6 Landing at Lehi Falls. Matt: Derailer—wasn't enthused about the project, went to visit the site and didn't agree with its viability. Saw some possibilities but maybe not today. Winnie: Momentum Builder. Justin: could be Transformational, but need to determine the feasibility of purchasing nursery land. Also commented that it is close to the Loop 202 so many metro visitors could go right into Mesa through Lehi Falls which could be a big draw. Jo: Derailer—could see potential but concerns about city economics and funding, particularly related to ongoing maintenance.

Idea #7 Indoor Recreation Space. Matt: Transformational—w/hot summers Mesa could make a great indoor space for play/recreation that could be epic. Winnie: Derailer: private sector has already built these. Cost could be high. If not privatized it would be hard to manage. Justin: Derailer—maintenance costs could be high. Jo: Transformational: need to have a place for low-income kids in summer.

Idea #8 Park Features (Pools). Matt: Quick Win. Hard to make it transformational; however, there is a need for pools on the east side. Reminded the group about quality of life impact is what brings people here. Suggested the city can transform older parks to have more interesting features. Winnie: Quick Win—supportive of pools but not another waterpark. Justin: Quick Win—but not a low effort and may not be a high impact for the whole city. However, the multi-use complex could be more of an economic driver. Jo: Transformational on the splash pad side, Quick Win if the county could change their code. Suggested the group recommend the city work to get code changed.

Idea #10 Regional Events. Matt: Transformational—want to bring bigger festivals here. Winnie: Transformational—yearly events are a way to bring people in. Justin: Quick Win—but narrow down the events. He likes Merry on Main but not downtown. City needs a bigger venue elsewhere to pull people in. Jo: Quick Win—city could be better with attractions.

Previous projects. Jo talked to council member about the current projects who said they are still relevant. Jo wants to make sure we don't lose the push to finish this development for the East side of Mesa. Justin and Matt agreed.

Jo asked the group to write down their top 3 ideas. Results:

1. *Youth sports complex*
2. *Bike/pedestrian trails. Matt suggests that this needs to have big ideas with it*
3. *Park features, including splash pads*

Additional discussion.

Subcommittee members had questions for Eric Guderian, Mesa Transportation Department, about the options/issues for trails near freeways, canals and powerlines.

The group discussed economic development opportunities along these paths.

They also discussed parks and pool features; the importance of adding shade; keeping currently bonded projects in the works; and using the leverage points they had to change County code as it relates to pools and splash pads.

Janet talked about next steps and encouraged them to fill out the impact/effort matrix for each idea under consideration. Jo suggested they all fill out the forms, complete the ratings, and send to her by November 10, so she could compile the information/recommendations for the presentation at full advisory committee meeting on November 16.

VI. Adjournment

Jo Martin adjourned the meeting at 7:26pm.

Minutes submitted by: Janet Woolum

The Landing at Lehi Falls

Steven Miner

Christian Richter

November 2, 2017

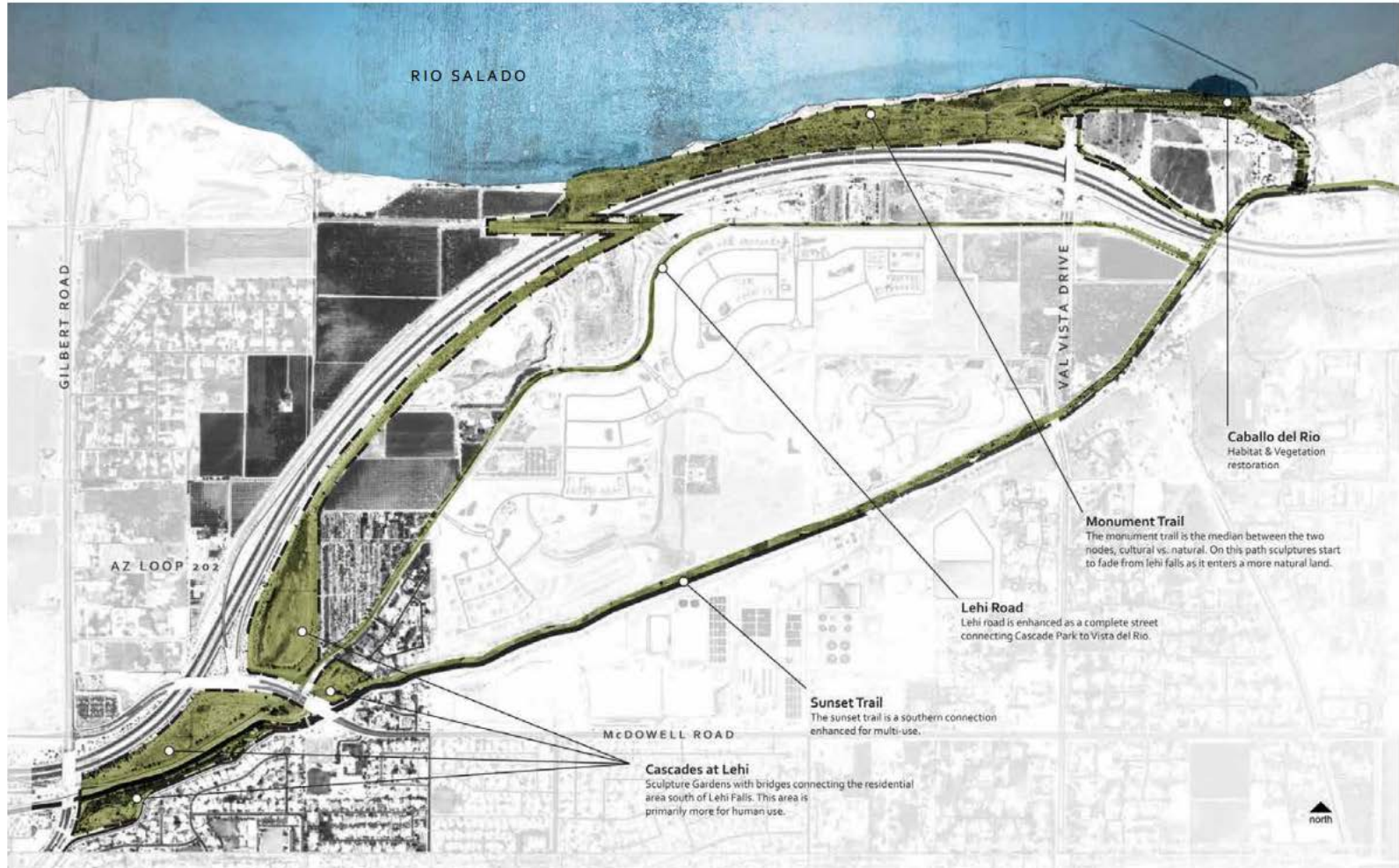
Introduction – The Vision

Nestled in the northern border of Mesa near the 202 Freeway and Gilbert road, the Landing at Lehi Falls will utilize a half-mile stretch of Mesa's historic canals and surrounding plots of land to create a truly unique public space.



Unveiling of the Mormon Pioneer Monument

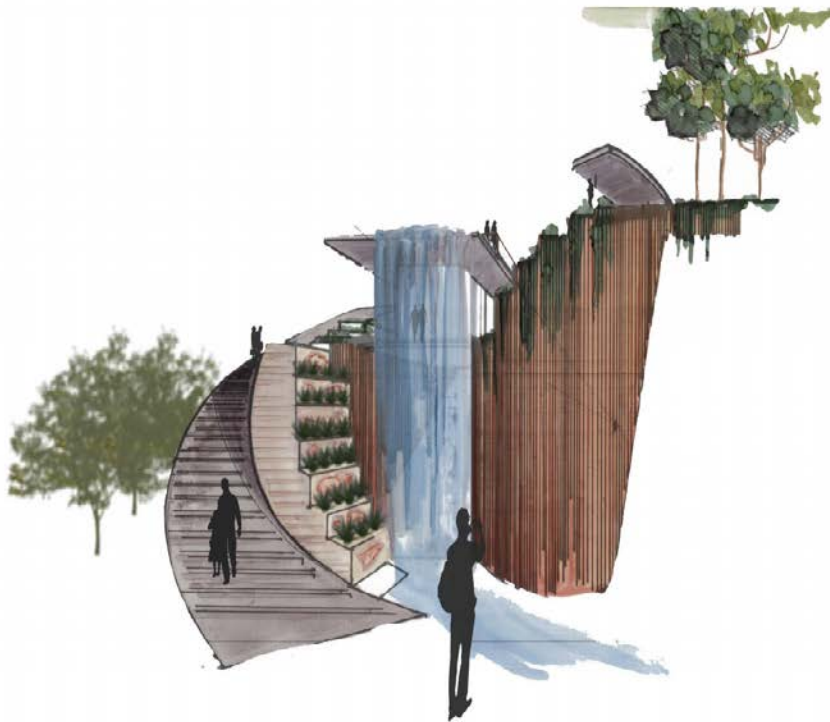
Introduction: Project Overview



Introduction - Overview



Introduction - Overview



Potential Park Features:

- Hydro-electric generating waterfall
- Canal boardwalk
- Hydroponic landscaping
- Solar lighting
- Multi-use public square
- Sports fields
- Equestrian arena
- Mixed-use trails

Location



- Historically significant
- Connection to Central Arizona Project and Hawes Trail
- Connection to Shepherders Park
- Prime views of desert beauty
- Easy access



Precedent: The Grand at Papago

The final phase of Papago Park Center, a 350 acre mixed-use business park.



Zoned with a Planned Area Development (PAD) overlay allowing for office, retail, and hotel uses.

Precedent: Arizona Falls



Combines art, history and technology to generate clean electricity from the canal's waterfall

Generates 750 kilowatts of clean renewable energy. Enough to power 150 homes.



Financing

Federal

- Recreational Trails Program
- Production tax credits (solar/wind)
- EPA funding
- Land and Water Conservation Fund / Outdoor Recreational Grant Fund
- Housing and Urban Development Funding

State

- Land grants and other non-monetary contributions from Arizona Department of Transportation (ADOT)
- Possible Renewable Portfolio Standard (RPS) funding

SRP

- Aesthetics Fund
- Land grants and other non-monetary contributions

Partnerships

City:

Mayor John Giles
Councilmember Mark Freeman
Transportation Department
Parks & Recreation

State:

State Senator Bob Worsley
Salt River Project
Arizona Department of Transportation

Community:

Former Mayor Scott Smith
Lehi Community
East Valley Partnership
Arizona Forward
ASU Landscape Architecture Program
Active Facebook Group

National:

Better City
Friends of the High Line
Atlanta Beltline Founder
Debevoise & Plimpton LLP

Contact



Christian Richter:

christian.c.richter@gmail.com

480-259-9202



Steven Miner:

stevominer@gmail.com

480-322-7157

